



LITTLE PARADISE AT GREYFIELD FARM

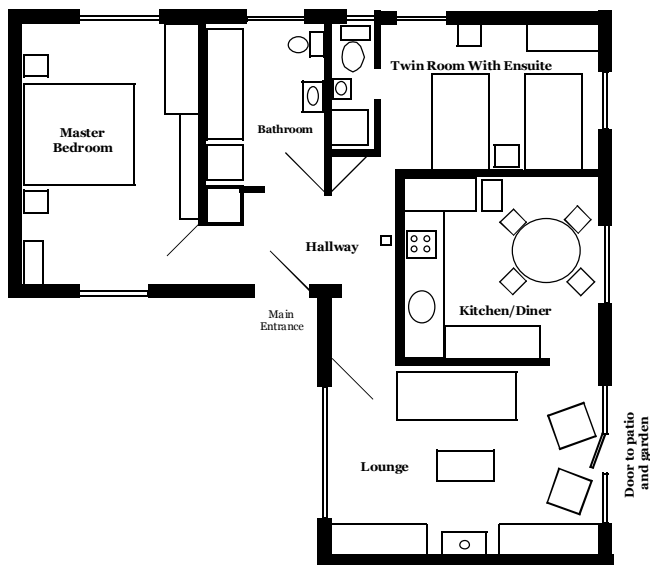
Greyfield Road
High Littleton
Somerset
BS39 6YQ

LITTLE PARADISE is an attractive self contained detached 2 bedroom cottage accommodating 4 people set in 3 acres of private grounds. Spacious, warm, and tastefully furnished, the cottage enjoys a peaceful hillside location 1/2 mile above the village.

One of 5 cottages set in tranquil surroundings, it makes an ideal holiday base for touring the South West, midway between Bath and Wells. Close to Bristol, Weston Super Mare, Cheddar & Glastonbury.



LITTLE PARADISE FLOOR PLAN



LITTLE PARADISE offers:

- Lounge with digital TV, video, DVD and log fire.
- Kitchen with dining area, electric cooker, washer dryer, fridge/freezer, dishwasher and microwave.
- 2 bedrooms - 1 double and 1 twin with en suite showeroom.
- Bathroom with bath and separate shower cabinet.
- Oil fired central heating and double glazing throughout.
- Direct line telephone (01761 472810) suitable for PC and Fax connection.
- Floor safe provided.
- Bed linen and towels provided.
- Cot and high chair available.
- The cottage is on ground floor level & has no internal steps or stairs.
- It is suitable for the disabled having wheelchair access.
- Inspected Access Grade 3.
- There is a private patio with garden furniture and a small enclosed garden.
- Ample safe parking exists adjacent to the cottage.

The following facilities are available on site free for the use of our resident guests:

- A top of the range Hot Tub Spa Bath (for 6)
- A Finnish Log Cabin Sauna
- A well equipped fitness centre
- A Gingerbread House (a winter BBQ cabin from Finland) compliments our BBQ corner.
- An information centre with videos, DVDs, books and lots of information concerning this part of the country.



- Please note that:
- Pets are accepted by prior arrangement only.
- Any non-standard facility required must be agreed prior to your visit.
- Prices are fully inclusive - there are no extra charges.

For further information please contact the resident owner Mrs June Merry.

- Tel/Fax (01761) 471132
- Web: www.greyfieldfarm.com
- E mail: june@greyfieldfarm.com